

Traiden
Global Solutions

Decisions



Pull the Trigger...Ride The Bullet



Case Study

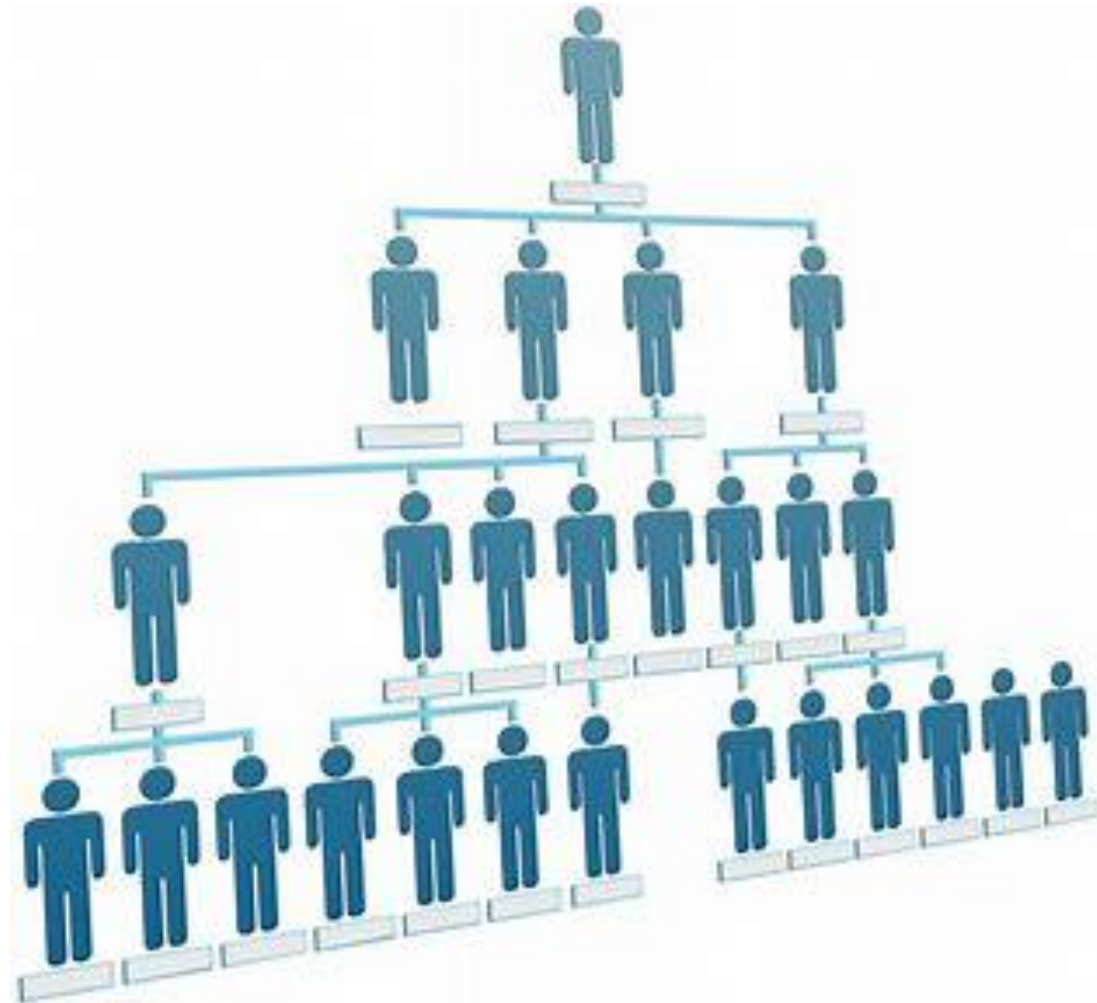
Bohpal India

Chernobyl

Ford Pinto



Leadership



Personality Traits

Four Temperaments

Choleric

Bad Temper or Irritable
Walking Boss

Sanguine

Optimistic leader-like
Table Dancer

Phlegmatic

Relaxed and peaceful
Faithful Follower

Melancholic

Analytical and quiet
I Dotter T Crosser



Leadership



Leadership

Humble + Hungry = Accidental Mess

Humble + Smart = Loveable Slacker

Humble + Hungry = Skillful Politician



Leadership

Compelling Vision

Comprehensive Strategies

Relentless Implementation



Leadership

- **Provide Firm and Consistent Leadership**
- **Show Everyone Your Destination From Start**
- **Expose Problems With or Without Solutions**



Incident Decisions

- **Define the problem**
- **Establish an acceptable risk**
- **Define expectations**
- **Develop alternate plans**
- **Make the decision**
- **Convert the decision into action**
- **Assess and Monitor Decision**



Response

- **Establish Command and Control of the Incident**
- **Assemble Incident Information**
- **Isolate the Area, Incident or Event**
- **Provide Protection to Employees**
- **Conduct Notification (Crisis Communications)**



Response

- **Perform Search and Rescue Operations**
- **Establish Medical Support Systems**
- **Provide Logistical Support to Incident**
- **Approve Activation of Specialized Operations**
- **Establish Recovery and Termination Criteria**



Crisis Communi- cation

- **Communications travel both ways**
- **Your audience expects information now**
- **Complete and accurate information**
- **Expect feedback, anticipate the questions in advance**



Crisis Communi- cation

- **Be real, be honest, be contrite when necessary**
- **Social Media has no emotion**
- **Deliver critical information in person**
- **The longer you stay quiet the louder others will speak**

